

Amplon N Gen3 UPS

Single-phase, 1-3 kVA, 230 Vac

Small and Reliable Power Guardian for Office & Home Critical Appliances

The Amplon N Gen3 Series 1-3 kVA is an online double-conversion uninterruptible power system (UPS) in a best-in-class compact size tower design. It supplies clean sine-wave input power for IT and other sensitive equipment and prevents work interruption, data loss or equipment damage from voltage sags, spikes, harmonic distortion and other power failures.



High Availability

- Output power factor 0.9 provides more wattage to critical loads
- True online double-conversion topology and zero transfer time to battery mode
- Generator compatibility ensures clean, uninterrupted power to the loads during an extended power outage

Green with Low TCO

- Capable of working in harsh electrical environments with wide I/P voltage range to minimize battery usage
- Excellent overload capacity allows the overload condition to continue within the timeframe
- AC-AC efficiency up to 90%, and ECO mode efficiency up to 95% for better energy savings

Easy Management

- The intuitive LCD display provides UPS status information with the ability to configure locally
- Supports multiple communication interfaces, including USB port, RS-232 port and Mini slot (option for mini SNMP, mini Modbus and mini relay I/O card) for remote monitoring and configuration
- Battery self-test function ensures early detection of the battery status when batteries need to be replaced



IT



Telecom



Industrial



Transportation



Financial



Government



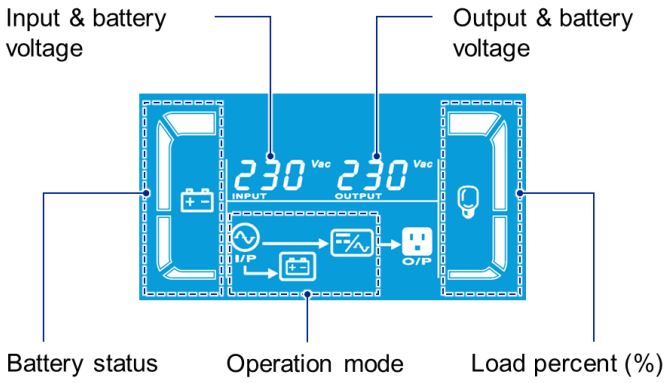
SME



Retail



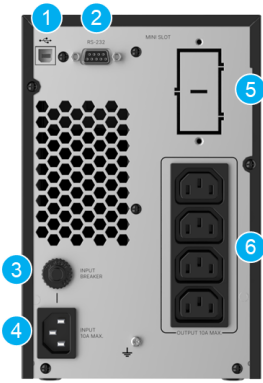
LCD



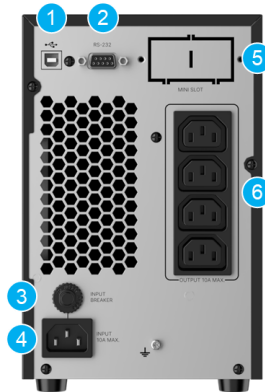
Rear Panel

Standard runtime model

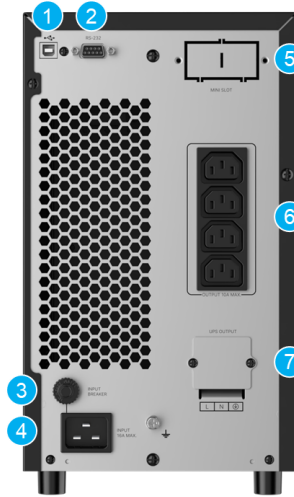
1 kVA



2 kVA

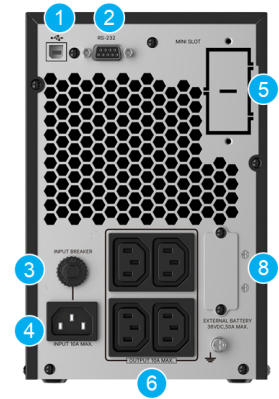


3 kVA



Extended runtime model

1 kVA



1 USB port

2 RS-232 port

3 Input circuit breaker

4 AC input

5 Mini slot

6 Output socket

7 Output terminal

8 External battery connector

Runtime Table- Standard runtime model

1 kVA

Load	90 W	180 W	270 W	360 W	450 W	540 W	630 W	720 W	810 W	900 W
Backup Time	57.5	26.9	16.8	11.9	9.1	7.3	6.1	4.3	3.6	3.1

2 kVA

Load	180 W	360 W	540 W	720 W	900 W	1080 W	1260 W	1440 W	1620 W	1800 W
Backup Time	61.1	28.3	17.7	12.5	9.5	7.7	6.5	4.5	3.8	3.3

3 kVA

Load	270 W	540 W	810 W	1080 W	1350 W	1620 W	1890 W	2160 W	2430 W	2700 W
Backup Time	67.1	29.4	18.1	12.5	10.3	8.2	6.9	4.9	4.2	3.6

Unit: min

Technical Specifications

Model		NX-1K	NX-2K	NX-3K
Topology		Online double-conversion		
Power Rating		1 kVA 0.9 kW	2 kVA 1.8 kW	3 kVA 2.7 kW
INPUT				
Nominal Voltage		220/230 Vac, 1P2W+PE		
Voltage Range		180-285 Vac (100% load); 120-180 Vac (60-100% load)		
Frequency		40-70 Hz		
Power Factor		> 0.99 (100% load)		
Connection		IEC C14		IEC C20
OUTPUT				
Nominal Voltage		200 ⁽¹⁾ /208 ⁽¹⁾ /220/230/240 Vac, 1P2W+PE		
Voltage Regulation		±1%		
Frequency		50/60 ± 3 Hz		
Total Harmonic Distortion (THDv)		≤ 3% (linear load)		
Power Factor		0.9		
Connection		IEC C13 x4		IEC C13 x4 + Terminal
Overload Capability	Standard ⁽²⁾ Extended ⁽²⁾	≤ 105%: continuous; 106-110%: 10 mins.; 111-130%: 30 secs; 131-150%: 3 secs; > 150%: immediately ≤ 105%: continuous; 106-110%: 10 mins.; 111-130%: 1 min; 131-150%: 3 secs; > 150%: 0.5 sec		
Current Crest Ratio		3:1		
EFFICIENCY				
Online Mode		Up to 90%		
ECO Mode		Up to 95%		
BATTERY				
Battery Type		VRLA		
Nominal Voltage	Standard Extended	24 Vdc 36 Vdc	48 Vdc N/A	72 Vdc N/A
Quantity	Standard Extended	2 pcs 3 pcs	4 pcs N/A	6 pcs N/A
Std. Model Runtime	100% load 70% load	3.1 mins 6.1 mins	3.3 mins 6.5 mins	3.6 mins 6.9 mins
Charge Current		1 A		
COMMUNICATION INTERFACE				
Display		LCD display with LED indicators		
Port		USB, RS-232, Mini slot		
Audible Alarm		Battery mode, Low battery, Overload, Fault, Bypass mode		
PHYSICAL				
Dimensions (W x D x H)		145 x 282 x 220 mm	145 x 492 x 220 mm	190 x 421 x 318 mm
Net Weight	Standard Extended	9.2 kg 4.4 kg	16.8 kg N/A	27 kg N/A
Packing Dimensions (W x D x H)		230 x 360 x 325 mm	230 x 590 x 355 mm	320 x 560 x 460 mm
Packing Weight	Standard Extended	10.3 kg 5.5 kg	18.6 kg N/A	28.4 kg N/A
ENVIRONMENT				
Operating Temperature		0 to 50 °C (40 to 50 °C de-rating to 70% load)		
Humidity		20-90% (non-condensing)		
Audible Noise ⁽³⁾		< 45 dBA		
Altitude		0-3,000 m (derating 1%/100 m from 1,000-3,000 m)		
Storage Temperature		-20 to 50 °C		
Ingress Protection		IP20		
CONFORMANCE				
Safety		CE, UKCA, TISI, RCM ⁽⁴⁾ , KC ⁽⁴⁾		
EMC		IEC 62040-2		
Sustainability		RoHS, REACH		

(1) 200V is for the extended runtime model, derating 200V and 208V to 80% load. The standard model derates 208V to 70% load.

(2) Standard model: built-in batteries; Extended model: capability to add external battery packs

(3) Audible noise test with UPS < 75% load at 25 °C in online mode

(4) Applicable only to the standard runtime models

All specifications are subject to change without prior notice.

Management Solution

UPSentry

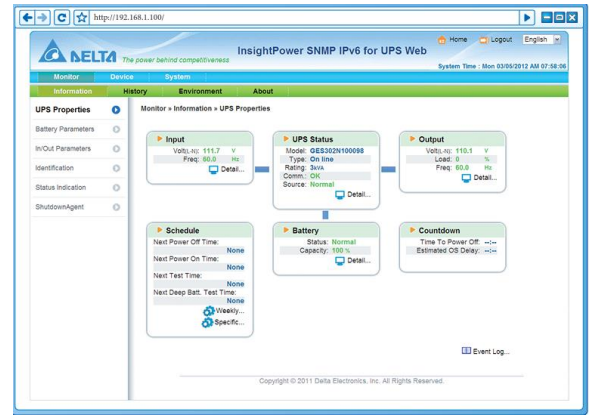
- Supports RS-232 & USB communication
- Scheduling shutdown, restart and battery test
- Event tracking

ShutdownAgent

- Provides a graceful unattended shutdown of multiple computer systems over a network

SNMP IPv6 (optional)

- Remote UPS management from any workstation through internet or intranet
- UPS and system function configuration from any client (password protected)
- Event logs and data tracking



What's in the Box

Standard Accessories

N Gen3 UPS

User manual

USB cable (1.5 m)

AC input cable (1.5 m)

External Battery Cable⁽¹⁾

Free ShutdownAgent software for local UPS status and shutdown

Free UPSentry software for remote network management



More Product Information

(1) Applicable only for extended runtime model

Optional Accessories

<p>Mini SNMP IPv6 (Part number: SCMS100035)</p>	<p>Manages UPS and system functions securely and adjusts parameters through SNMP management stations or Internet Browsers using HTTP forms.</p>
<p>Mini Relay I/O card (Part number: 3915101864-S)</p>	<p>Offers 6 relay output contacts to monitor status and 2 input contacts for simple shutdown and battery testing in UPS management.</p>
<p>Mini Modbus Card (Part number: 3915101865-S)</p>	<p>Supports Modbus communication with a PC via RS-485 and RS-232 interfaces, allowing for flexible and simultaneous use.</p>



Delta Group



Delta Power Solutions



Delta ICT LinkedIn



Delta ICT YouTube

