

Delta UPS - Amplon Family

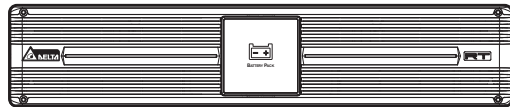
Delta External Battery Pack for
Amplon RT 1/ 2/ 3kVA UPS

Installation & Operation Quick Guide

ENGLISH

1 Product Introduction

The Delta External Battery Pack is applicable to the Delta Amplon RT 1/ 2/ 3kVA UPS. When the UPS is operating during a power outage, the battery pack provides DC power, which maintains inverter operation to supply power to the critical loads connected to the UPS.



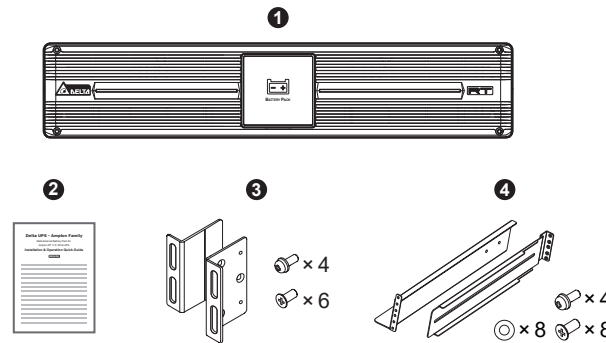
(Figure 1: Delta External Battery Pack Front View)

2 Important Safety Instructions

- Servicing of batteries and battery packs must be performed or supervised by qualified service personnel knowledgeable in batteries, battery packs and the required precautions. Keep unauthorized personnel away from batteries and battery packs.
- A battery can present a risk of electric shock and high short-circuit current.
- To reduce the risk of fire or electric shock, install the battery pack in a temperature and humidity controlled indoor area free of conductive contaminants.
- Forbid opening or removing the cover of the battery pack to avoid high voltage electric shock.
- The risk of dangerous high voltage is possible when the batteries are still connected to the UPS even though the UPS is disconnected from the mains. Do not forget to disconnect the battery cable to completely cut off the battery source.
- Turn off the UPS and cut off the AC source before performing battery/ battery pack replacement.
- Only use the same type of batteries from the same supplier. Never use old, new and different Ah batteries at the same time.
- The number of batteries must meet UPS requirements.
- Do not reverse or short circuit the polarity + and - when connecting the batteries because this will destroy the device and constitute a risk of electric shock or fire.
- Use a voltage meter to measure whether the total voltage, after battery pack connection, is around $12.5Vdc \times$ the total number of batteries.
- The external slits and openings in the battery pack are provided for ventilation. To ensure reliable operation of the battery pack and to protect the battery pack from overheating, these slits and openings must not be blocked or covered. Do not insert any object into the slits and openings that may hinder ventilation.
- Do not allow liquid or any foreign object to enter the battery pack.
- Do not place beverages or any other liquid-containing vessels on or near the battery pack.
- Do not dispose of the battery or batteries in a fire. The batteries may explode.

- Do not open or mutilate the battery or batteries. The released electrolyte is harmful to the skin and eyes and may be toxic.
- Observe the following before replacing batteries:
 1. Remove watches, rings, or other metal objects.
 2. Use tools with insulated handles.
 3. Wear rubber gloves and boots.
 4. Do not lay tools or metal parts on the top of batteries.
 5. Disconnect charging source prior to connecting or disconnecting batteries' terminals.

3 Package List

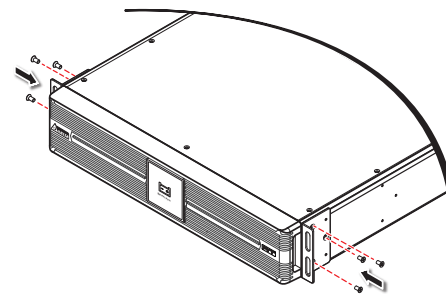


No.	Item	Q'ty
1	Delta External Battery Pack	1 PC
2	Installation & Operation Quick Guide	1 PC
3	Bracket Ear	1 SET
4	Rail Kit	1 SET

4 Installation Procedures

• Rack Mounting:

- 1 Attach the included bracket ears to the lateral mounting holes of the Delta external battery pack. See Figure 2.



(Figure 2: Mount the Bracket Ears)

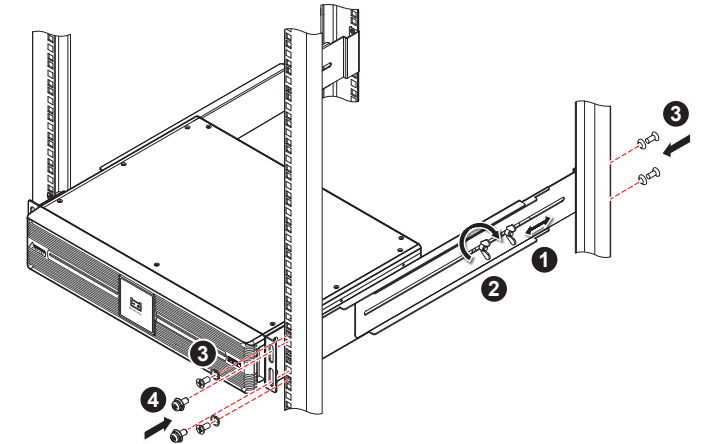
- 2 Follow steps 1 to 4 to install the Delta external battery pack into the provided rail kit and your rack. See Figure 3.

Step 1: Adjust the length of the rails according to your rack.

Step 2: Tighten the rails' nuts.

Step 3: Fix the rails on your rack.

Step 4: Insert the Delta external battery pack into your rack and tighten the provided screws.

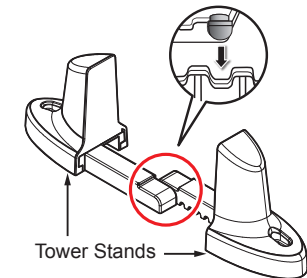


(Figure 3: Insert the Delta External Battery Pack into Your Rack)

NOTE: If you want to use a non-Delta rail kit, please only follow step 4.

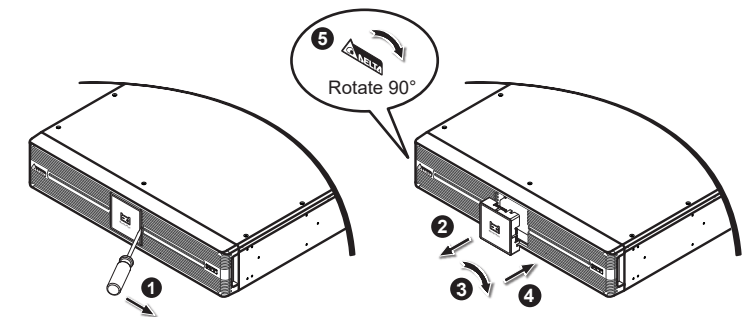
• Tower Mounting:

- 1 Assemble the tower stands (optional) by inserting the tenons into the grooves. See Figure 4.



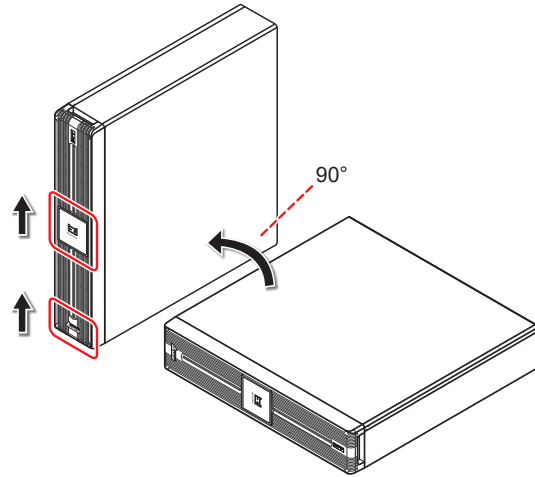
(Figure 4: Assemble the Tower Stands)

- 2 Pull out the Delta external battery pack's control panel (1 & 2), rotate it 90° clockwise (3) and re-insert the control panel (4). After that, rotate the Delta logo nameplate 90° clockwise (5). See Figure 5.



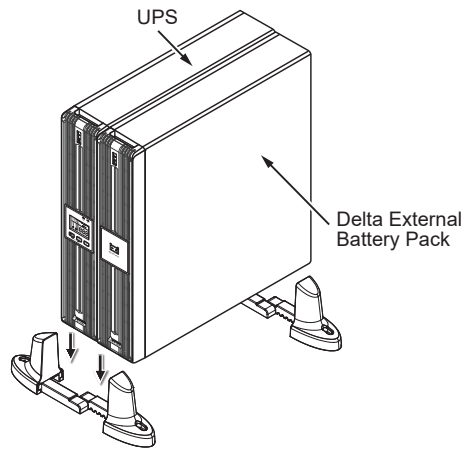
(Figure 5: Rotate the Delta External Battery Pack's Control Panel & Delta Logo Nameplate)

- Carefully lift the Delta external battery pack upright with the Delta logo and the battery icon facing up. A minimum of two people are required. See **Figure 6**.



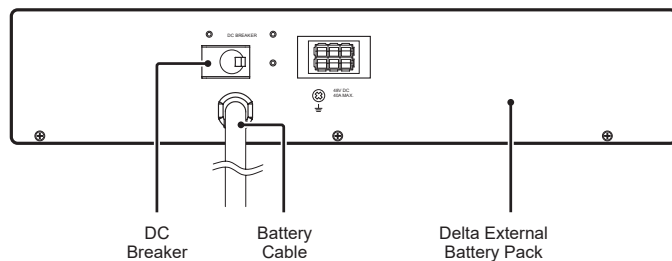
(Figure 6: Place the Delta External Battery Pack Upright)

- Place the Delta external battery pack and the UPS inside the tower stands. See **Figure 7**.



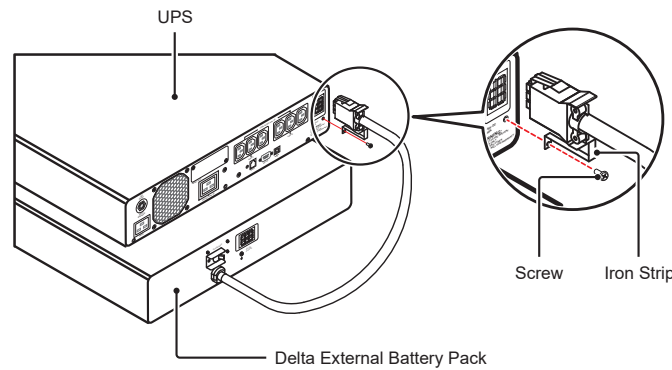
(Figure 7: Place the Delta External Battery Pack and the UPS inside the Tower Stands)

• Connect the Delta External Battery Pack with the UPS



(Figure 8: Delta External Battery Pack Rear View)

- Set the battery pack's DC breaker to the **OFF** position.
- Remove the cover of the battery pack connector located on the rear side of the UPS.
- Connect the battery cable attached to the Delta external battery pack to the UPS's battery pack connector. Make sure the battery cable's iron strip shown in **Figure 9** is tightly screwed.



(Figure 9: Connect the UPS and the Delta External Battery Pack)

- Set the external battery pack's circuit breaker to the **ON** position.
- Use either the UPSentry 2012 software (included in the provided CD packed in the UPS package) or the UPS's LCD to set up the battery pack number.



NOTE:

- If the UPS is going to run for the 1st time, before operation, please fully charge the batteries (internal and external) until the Battery Level Bar Graph shown on the UPS's LCD is fully on.
- Normally, the life of a battery is 3~5 years. However, an extreme operating condition and environment may shorten its life-span.
- When the UPS has not been used for a period of time, the batteries will discharge slightly. It is recommended to charge the batteries (internal and external) once every 3 months, and each time, fully charge them until the Battery Level Bar Graph shown on the UPS's LCD is fully on.
- Safety Requirement:

For convenient removal of the battery power cord in an emergent situation, please arrange and organize each cable/ wire connecting to the UPS and the Delta external battery pack well.

5 Operation Procedures

- Follow **Delta Amplon RT Series 1/ 2/ 3kVA UPS User Manual** to execute input/ output connection.
- Follow **4 Installation Procedures** to connect the UPS and the Delta external battery pack.
- Follow **Delta Amplon RT Series 1/ 2/ 3kVA UPS User Manual** to turn on the UPS.

6 Optional Accessories

No.	Item	Function
1	Tower Stands	Mount the UPS or the external battery pack in an upright position.



NOTE: If you need to purchase the tower stands, please contact your local dealer or customer service.

7 Technical Specifications

Delta External Battery Pack		RT-1KB	RT-2KB	RT-3KB
Applicable to Amplon RT Series UPS		1kVA	2kVA	3kVA
Battery	Type	VRLA		
	Q'ty	2 x 2 x 12V/ 9 Ah	2 x 4 x 12V/ 9 Ah	2 x 6 x 12V/ 9 Ah
Dimensions (W x D x H)		440 x 335 x 89 mm	440 x 432 x 89 mm	440 x 610 x 89 mm
Weight		15 kg	27 kg	44 kg
Environment	Operating Altitude	1000 meters (without derating)		
	Operating Temperature	0 ~ 40°C		
	Relative Humidity	5 ~ 95% (non-condensing)		



NOTE:

- Please refer to the rating label for the safety rating.
- All specifications are subject to change without prior notice.

Copyright © 2018 by Delta Electronics Inc. All rights reserved. Changes may be made periodically to the information in this Quick Guide without obligation to notify any person of such revision or changes.